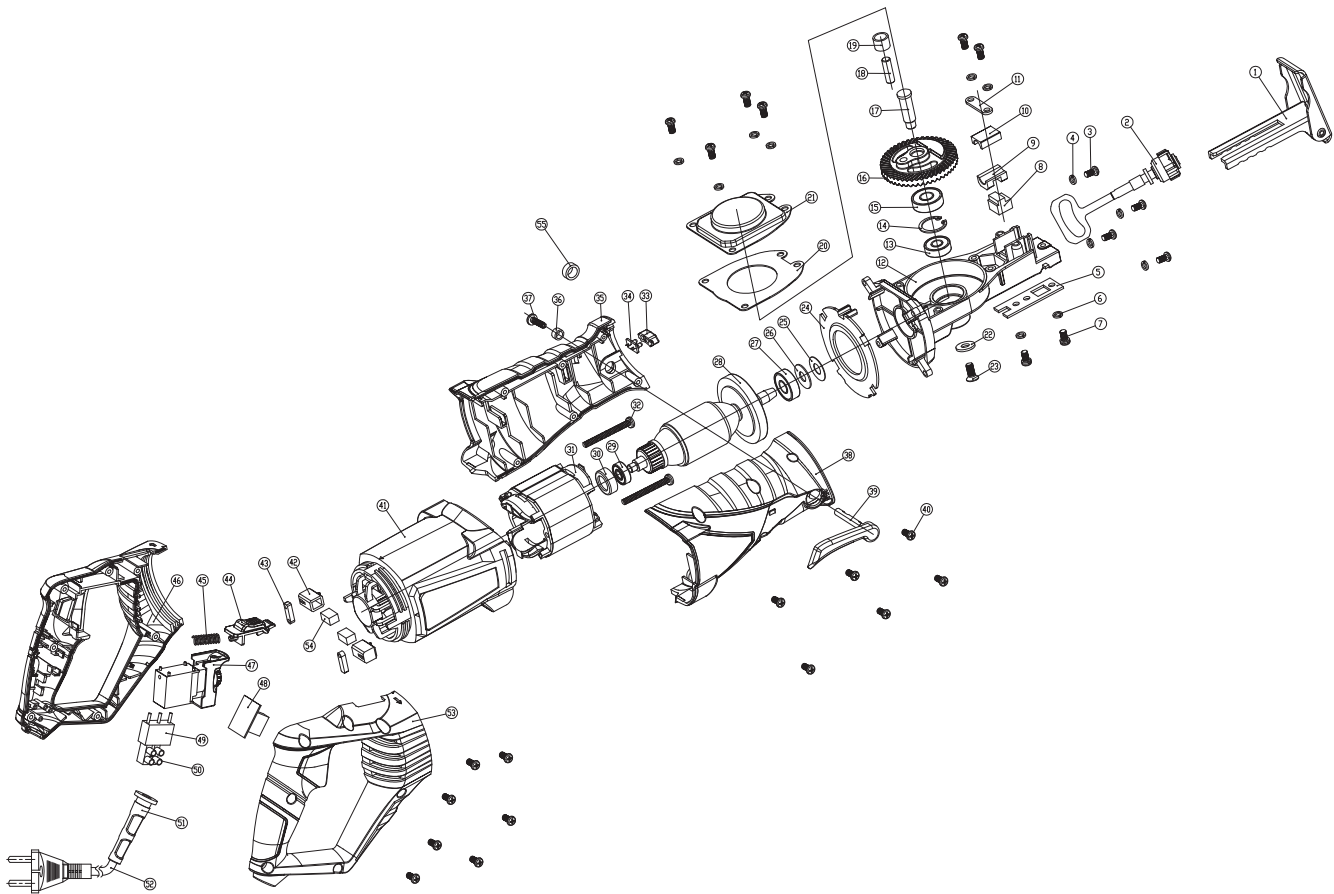


# Exploded drawing of Reciprocating Saw RDP-SRS20



**Spare parts list of Reciprocating Saw RDP-SRS20**

1	base assembly	1
2	reciprocating assembly	1
3	screw ST4*20	4
4	spring washer 4	4
5	baffle	1
6	spring washer 5	2
7	baffle screw	2
8	lubrication mat	1
9	upper slid	1
10	lower slid	1
11	slid pressing plate	1
12	central holder	1
13	bearing 608	1
14	baffle circle22	1
15	bearing 6000	1
16	driven pulley gear	1
17	gear shaft	1
18	eccentric shaft	1
19	shaft sheath	1
20	plate	1
21	cover plate	1
22	clamp gasket	1
23	screw M5*16	1
24	baffle circle	1
25	gasket	1
26	dustproof gasket	1
27	bearing 6000	1
28	rotor	1
29	bearing	1
30	shockproof circle	1
31	stator	1
32	screw ST4*53	2
33	lampshade	1
34	light PCB plate	1
35	right housing	1
36	locating sleeve	1
37	screw M4*6	1

code	Name	qty
38	right housing	1
39	qucik chuck plate	1
40	screw ST4*16	13
41	housing	1
42	brush holder	2
43	brush holder press plate	2
44	rotate button	1
45	spring	1
46	left handle housing	1
47	speed control switch	1
48	capacitor voltage transformation plate	1
49	capacitor	1
50	teminal	1
51	cable sheath	1
52	cable	1
53	right handle housing	1
54	carbon brush	2
55	avoid finger top baffle	1